



COMPANY PROFILE

A large circle is centered on the right side of the image. It is divided vertically into two equal halves. The left half is white with a pattern of thin, concentric, light gray circles. The right half is a solid light gray. The background is a solid blue color. In the top right corner, there is a triangular area with a pattern of thin, concentric, light blue circles. The text "CREATE • WORK • INSPIRE" is centered horizontally across the middle of the large circle.

CREATE • WORK • INSPIRE

The background of the entire image consists of numerous concentric circles in a light gray color, centered on the right side of the frame. These circles create a ripple effect that expands from the center towards the left edge.

# **WE MAKE YOUR DREAMS COME TRUE**

We offer our clients a peace of mind that comes with having a professional.

organization dedicated to creating exemplary events.

# WHO WE ARE

We, ONPOINT GEN. TRDG & CONT. Co, with a developing expertise; augment our services by providing exemplary solutions to our client requirements. Placing a premium on careful study, organisation and execution, we are committed to every detail until each project achieves its purpose and is satisfactorily completed.

In every instance, we create a solution that bends functional utility within our client's budget and are resolved to provide a quality working environment with optimal operating performance. Of equal importance, we are also dedicated to maintaining high standards of after sales service.

نحن، شركة أون بوينت للتجارة العامة والمقاولات، نمتلك الخبرات المتطورة ونعمل على الارتقاء بمستوى الخدمات التي نقدمها وذلك عن طريق تقديم الحلول المثالية لمتطلبات عملائنا. ونضع الاهتمام الأساسي على الدراسة الواعية والشاملة والتنظيم والتنفيذ المثالي ولذلك فأنا ملتزمون بكافة التفاصيل حتى يحقق المشروع هدفه وحتى يكتمل المشروع بصورة جيدة.

فعلى سبيل المثال أننا نعمل على إيجاد الحلول التي تحقق القدرات الوظيفية في إطار ميزانية عملائنا والحلول التي يتم تقديمها للوصول لبيئة عمل عالية الجودة مع أقصى القدرات التشغيلية، وعلى نفس القدر من الأهمية فأنا نبذل كل جهودنا من أجل الحفاظ على أعلى المعايير في خدمة ما بعد البيع.



# VISION & MISSION

## VISION

We strive to build quality projects and to enhance the client experience, giving our clients confidence and satisfaction in all phases of the process.

## MISSION

Dedicated to providing quality work, technical and management services to our customers. We will strive to implement a long term relationship with our clients, based on safety, quality, timely service and an anticipation of their needs. To help fulfill this mission, we will treat all employees fairly and involve them in the quality improvement process to insure responsiveness and cost effective work execution.

## رؤيتنا

نحن نسعى جاهدين لبناء مشاريع بجودة، وإعطاء عملائنا الثقة والرضا في جميع مراحل العملية.

## مهمتنا

توفير جودة العمل والخدمات الفنية والإدارية لعملائنا. سوف نسعى جاهدين لتنفيذ علاقة طويلة الأمد مع عملائنا، بناءً على السلامة والجودة والخدمة في الوقت المناسب وتوقع احتياجاتهم. للمساعدة في تحقيق هذه المهمة، سنعامل جميع الموظفين بإنصاف وإشراكهم في عملية تحسين الجودة لضمان الاستجابة وتنفيذ العمل الفعال من حيث التكلفة.



# **OUR SERVICES**

# OUR SERVICES

## Interior/Exterior Décor

We plan, implement and execute décor schemes in homes, hotels, office, buildings, shops, restaurants, café's and schools. We assist clients in problem solving. It's a challenge to come up with a solution that will suit both the taste of the client, the characteristics of the building/room, with a variety of color schemes, lighting, furniture, floor coverings, curtains, paint, wallpaper and hardware products.

## الديكور الداخلي/الخارجي

أننا نقوم بالتخطيط والتنفيذ والإنجاز لمخططات الديكور في المنازل والفنادق ومباني المكاتب والمحلات والمطاعم والكافيهات والمدارس، وكما أننا نعمل على مساعدة عملائنا من أجل حل مشاكلهم، وهذا الأمر يشكل تحدياً كبيراً علينا حتى نصل إلى حل يتناسب مع العنصرين الرئيسيين يتناسب مع ذوق العمل ومع خصائص المبنى/ الغرفة، ومع وجود مجموعة من مخططات الألوان والإضاءة والأثاث وتكسية الأرضيات والستائر والأصباغ وأوراق الحائط والمنتجات المادية.



Production

**All Kind of Form letter sign production under one roof**  
**CNC Router cutting**  
**Fiber Laser Cutting**  
**Laser cutting**  
**Form letter bending and welding**





**Flag pole with concrete base welded and painted for out door  
For rash weather & long lasting**









Frame works with ACP installed from all sides  
High Quality digital print graphic from all sides  
Concrete base with flag pole and flag





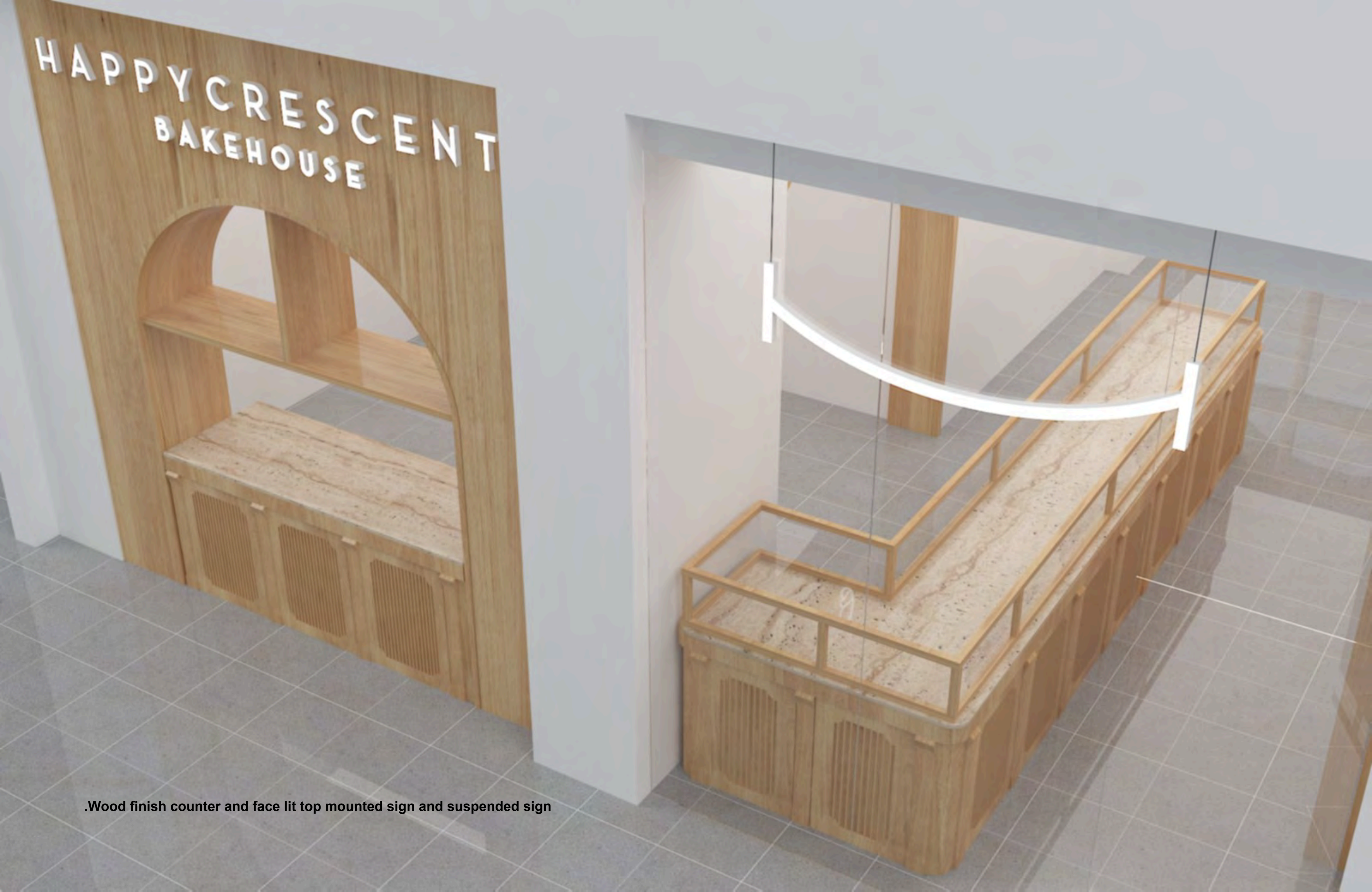
Back Drops with base plate for strong stability, suitable for indoor or outdoor use  
all material is Fabricated with steel structure with Aluminum powder coated cladding





Indoor and Out Door Booth: Made of steel structure with water proof wooden base floor along with aluminum powder coated backing with aluminum powder coated skirting. Screen is flush mounted to give sharp finishing to avoid showing the beadings, the signs are all made of push thru edge lit sign with green outdoor vinyl to give edge lit effects





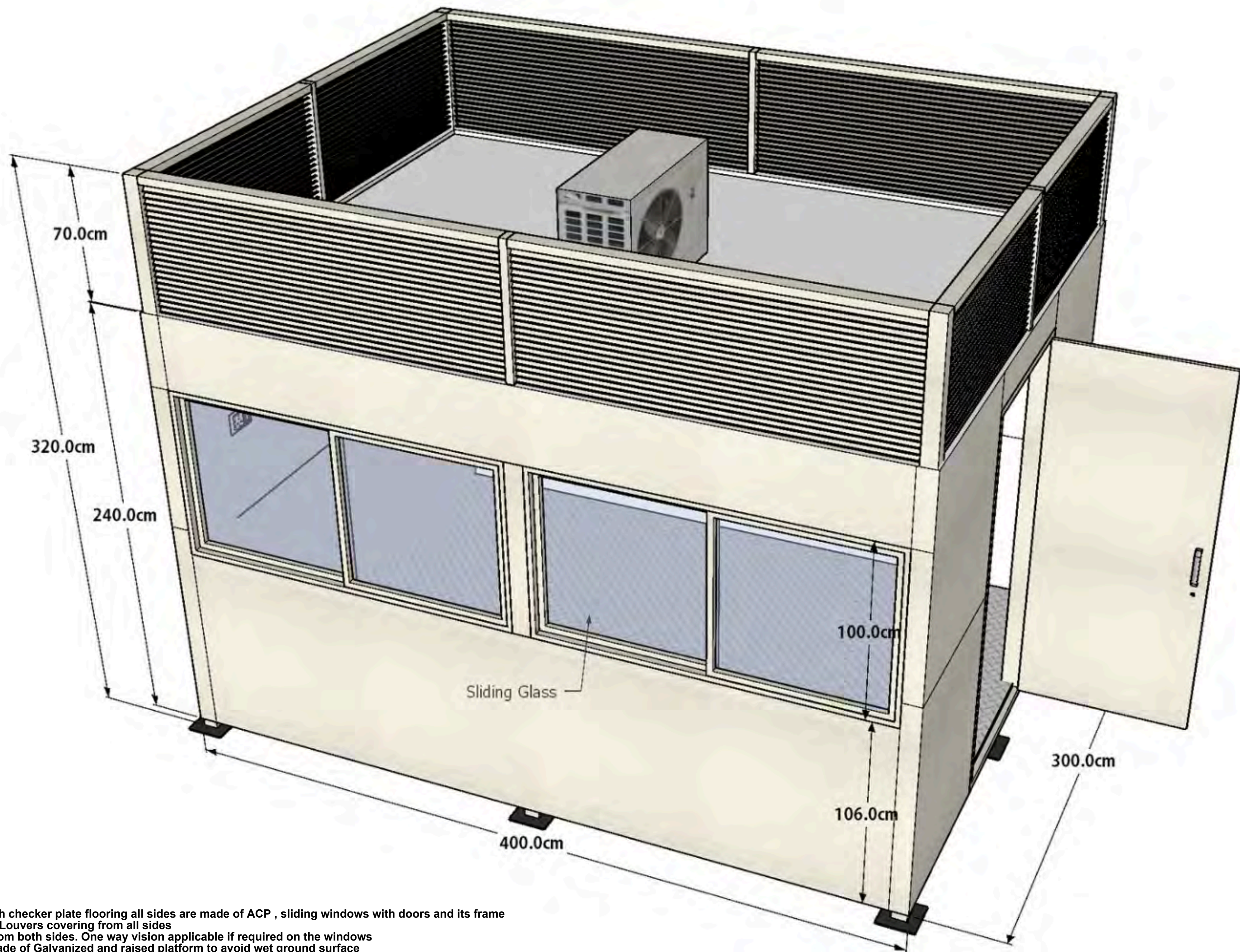
.Wood finish counter and face lit top mounted sign and suspended sign





Elegant design hazel nut wood finish Aluminum powder coated with matt finish on both sides  
Indoor platform wood finish  
Aluminum powder coated with structural frame from inside  
push thru edge lit signs





Metal Structure with checker plate flooring all sides are made of ACP , sliding windows with doors and its frame  
 . Air condition with Louvers covering from all sides  
 Sliding windows from both sides. One way vision applicable if required on the windows  
 .Base plates are made of Galvanized and raised platform to avoid wet ground surface





Indoor Reception made of steel structure from Inside and ACP cladding the base has skirting corian top in black finish. All sides has frame with 10mm acrylic , doors from three sides for easy access,Rack system all around to keep things along with locked cabins



Steel structure pole installed on concrete base with metal rope supports from sides to stabilize on wind as it is installed on open area  
Light box made of Aluminum and steel structure from inside mounted with LED lights fascia is installed with white acrylic along with high quality vinyl cut graphics to give face lit effects



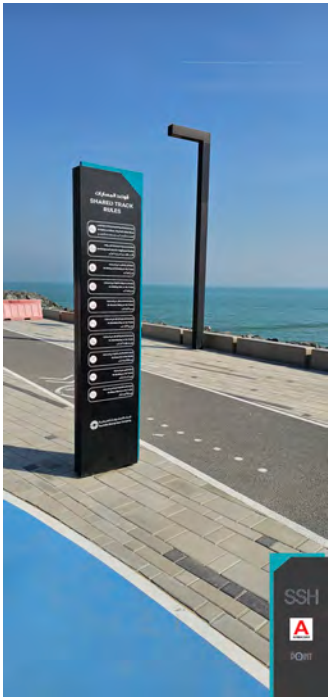
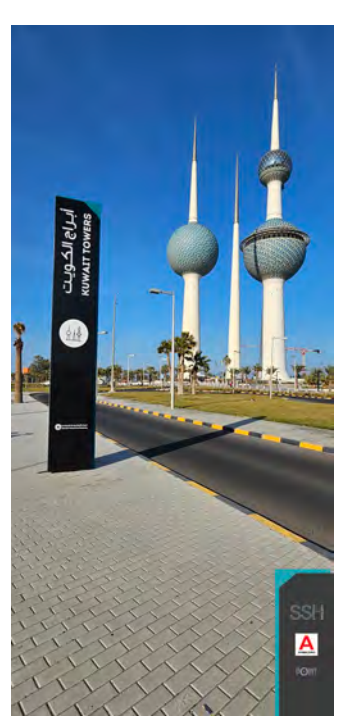




centrepont  
**SALE** UP TO **60% OFF**

UNIPOLE SIGNS made of heavy duty 20mm thick pipe installed on big concrete base coated with out door heavy duty paint to avoid rust top frame made of metal light box mounted with LED lights to give face lit effects. High quality Digital-print graphic on KOREAN made out .door flex material to outstanding the hard weather





# Ahmadiyah Water Front Beautification Project

Steel structure with aluminum powder coated with semi glossy finish  
 base and steel are galvanized and powder coated to outstand clore mixed and  
 . salt mix weather and humid  
 All graphics are out door UV print to last long on the direct summer sunlight





IKEA WAREHOUSE MALL

**Form letter face lit sign made of Aluminum structure and aluminum powder coated body mounted with LED to give face lit effects, fascia is installed with high quality acrylic with high quality vinyl from 3M to withstand the heat and direct sunlight**

# IKEA Shuwaikh



Form letter face lit sign made of acrylic and aluminum backing mounted with LED



Light box made of Aluminum powder coated mounted with LED along with high quality KOREAN made flex with high quality digital print graphic



# Burgan Bank Head Office



Form letter back lit sign made of aluminum power coated mounted with LED and install on the existing rock finish wall with spacers



## WINGSTOP BEDA



Form letter back lit and front lit sign made of Aluminum powder coated mounted with LED from back to give back lit effect and install with spacers , fascia will be mounted with led to give face lit effect and . installed with acrylic on fascia  
Cut graphic on the windows made of high quality 3M out door vinyl



# WARBA BANK ALL BRANCHES



**Form Letter Face Lit step cut sign made of Acrylic with step cut and install on alumionum powder coated returns with aluminum powder coated base mounted to the wall along with LED to give face lit effect**



# IHOP Applebees & Pizza Hut

Form letter signs and stripes made of aluminum backing with mounted LED and acrylic fascia, all the signs are made by Laser and Fiber laser



Unipole made of high quality steel pipe 20mm thick with out door paint coated finish with extended pipes holding light box with LED mounted from inside and high quality flex with high quality printed graphic for external use





# NANDOOS ASSIMA MALL



Form letter suspended sign made of Aluminum powder coated with mounted LED along with red acrylic fascia to be installed in 20 degree angled suspended from sealing , the LED push thru light box will be bend to a degree to match the sign above



Engrave on 5mm clear acrylic and install neon LED and install on the existing wall to give neon style with better quality finish



# Pedestrian & Vehicular Signs Alkout Mall



Steel structure with aluminum powder coated cladding which will have fiber laser stencil cut on the fascia of the aluminum and push thru acrylic white is placed, mounted with LED lights to give lit letter effects and install on a concrete base. The side have triangular acylic with high quality vinyl print color and installed on three sides outdoor Installed on 2018

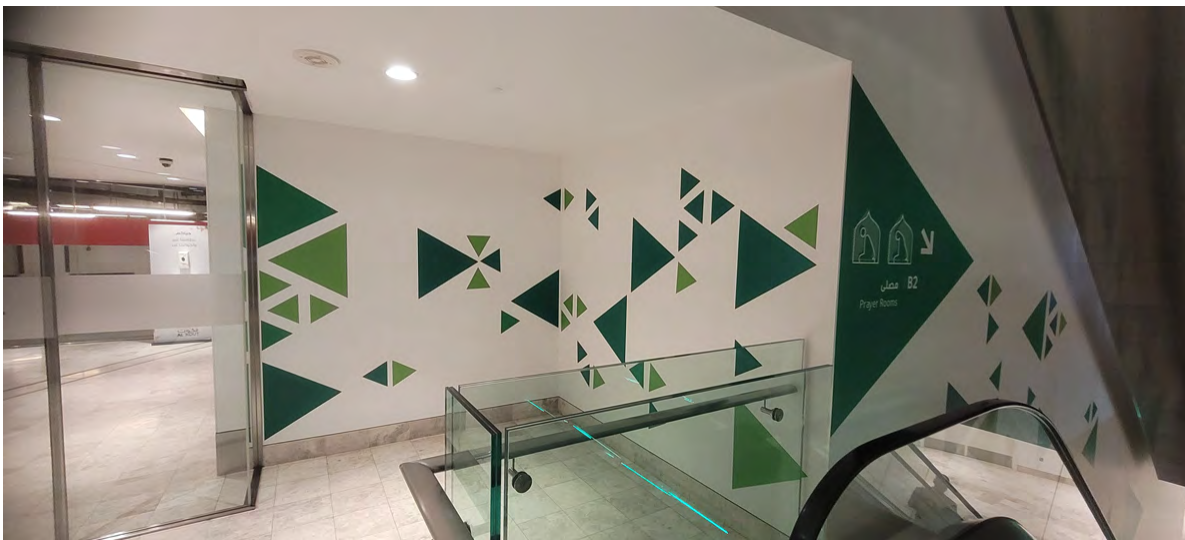
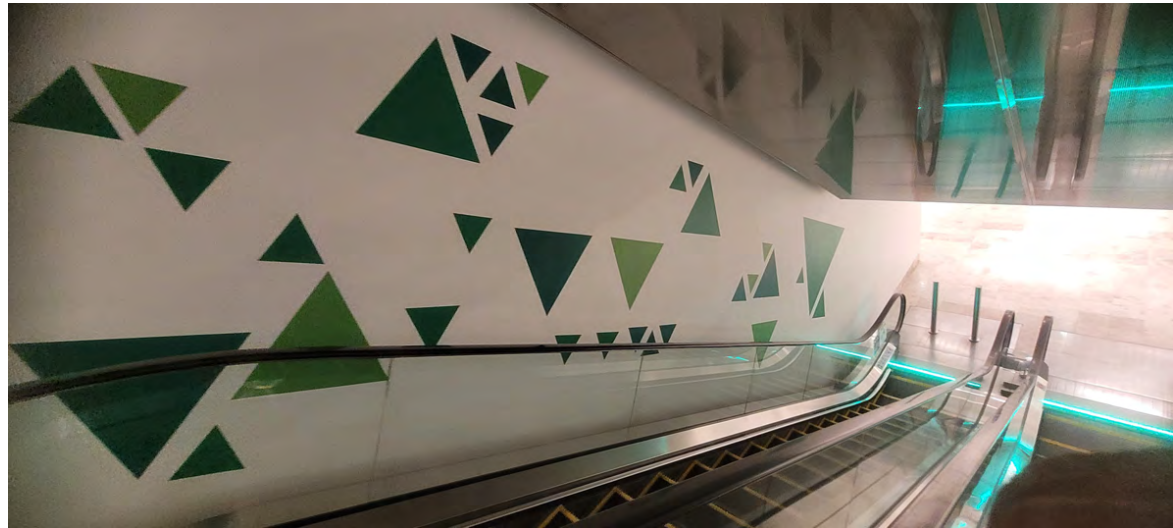


# Al Kout Mall Facade Panel

Form Letter and Flex  
branding

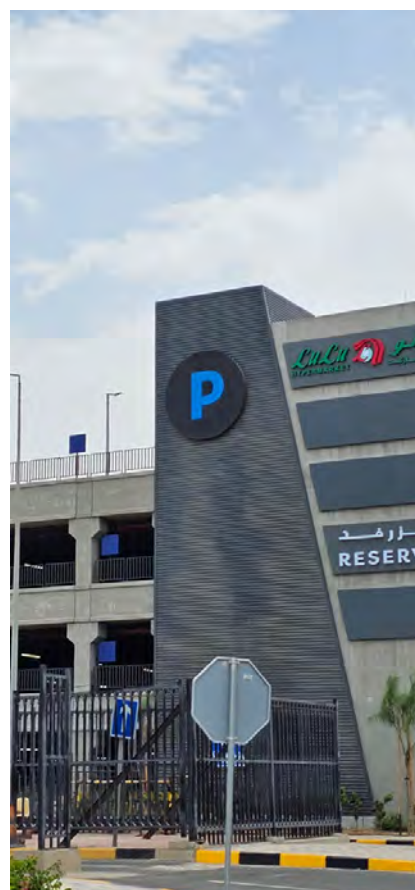


# Al Kout Mall B1 & B2



**3M Cut graphics on existing white wall**





## Ware House Mall Parking

Aluminum powder coated with acrylic step cut to give flat fascia , mounted with LED go give face lit . effect

# Khairan Mall facade Panels



Form letter signs with ACP & flex branding





IHOP Applebees & Pizza Hut





Form letter Face Lit Sign



Forex cut out signs with paint finish

Aluminum powder coated with stencil cut and install on the existing backing with light





# Kashta Kout Wafra



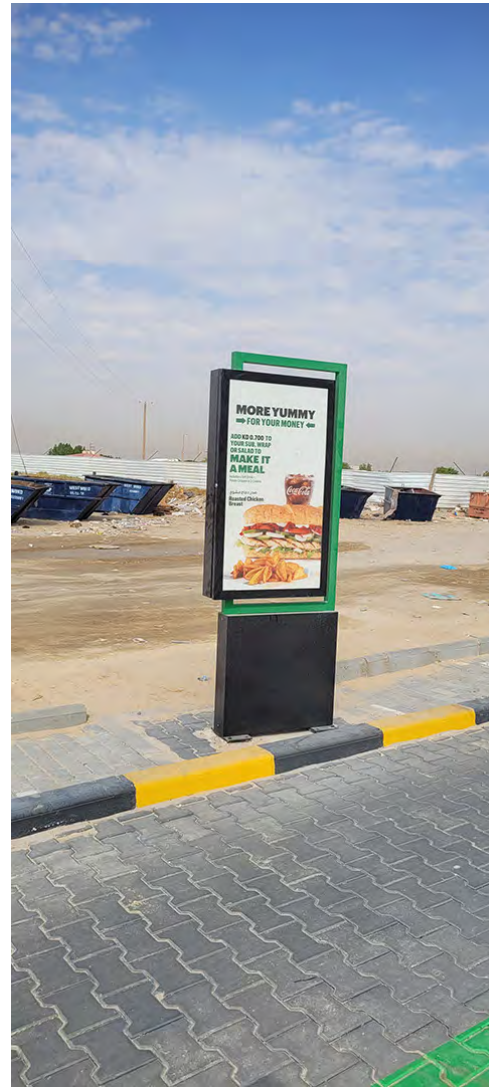
Light Box, form letter face lit signs and uni pole sign



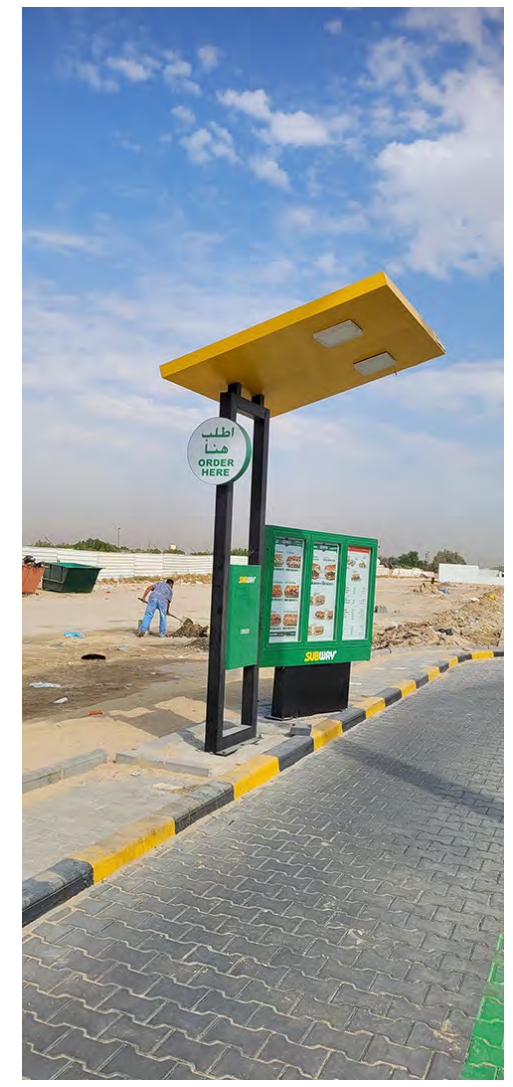
# Kashta Kout Wafra



Made of Aluminum powder coated Aluminum pipes powder coated and install on concrete base. Cut sticker graphics on both sides



Menu board made of Steel structure and clad with aluminum powder coated with clear acrylic fascia, the graphics are printed in duratrans, mounted with LED backing to give effects from back



Canopy with lights install on steel structure which will be installed on a concrete base, all powder coated to withstand heat and harsh weather



# IHOP Applebees & Pizza Hut



Wood cut on CNC and give semi glossy finish and install them as per the design and red acrylic with paint finish on the center with apple shape



Laser cut on clear acrylic with high quality vinyl red and white placed from inside and install on the wall with spacer



Cut Aluminum powder coated sign with fascia acrylic step cut to give excellent finish



# Kababji Adaliya

Form letter sign with green acrylic fascia  
logos are red acrylic with white cut  
stickers mounted with





# Pizza Hut, Burger King and Subway



Form Letter Signs with Logo light box



Cut out acrylic letters with paint finish



Suspended sign with bracket to the sealing



Graphic wrap on ATM







Fiber laser cut on steel with powder coating





Form letter sign on the center with light box, fascia installed with acrylic and high quality graphic printed and installed with trim  
Cut out acrylic with pink paint finish  
J's logo made of Aluminum powder coated and install on base and anchored to the existing sand with green carpet  
Aluminum round pipes powder coated and shaped edge like pencil and powder coated





Carpentry works and powder coated color pipes





Powder coated push thru light box installed on the existing stainless steel pipes





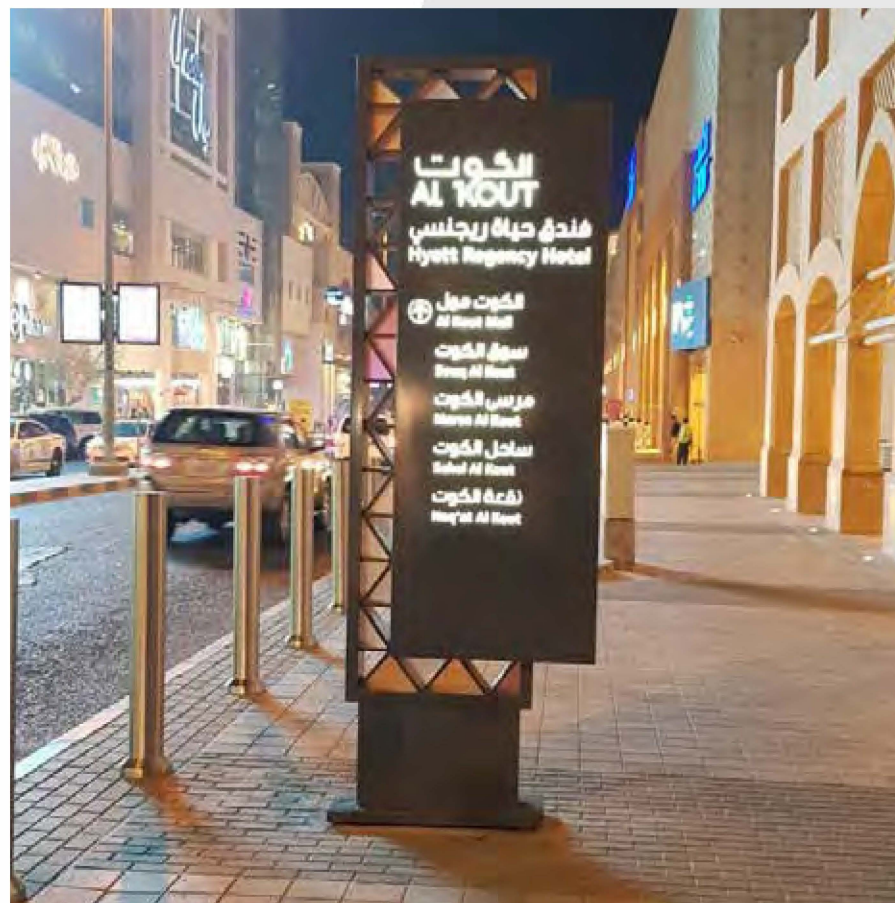
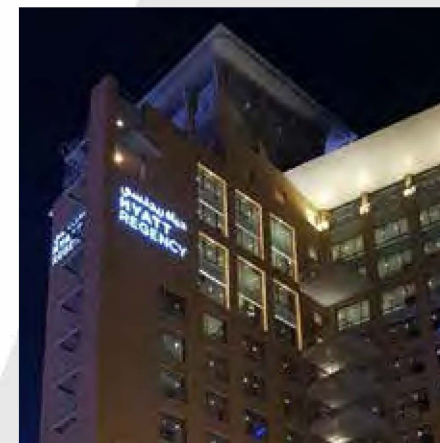
Metal frame works





Form letter face lit sign with day/night acrylic (Lights OFF turns to black / Lights ON turns to white)

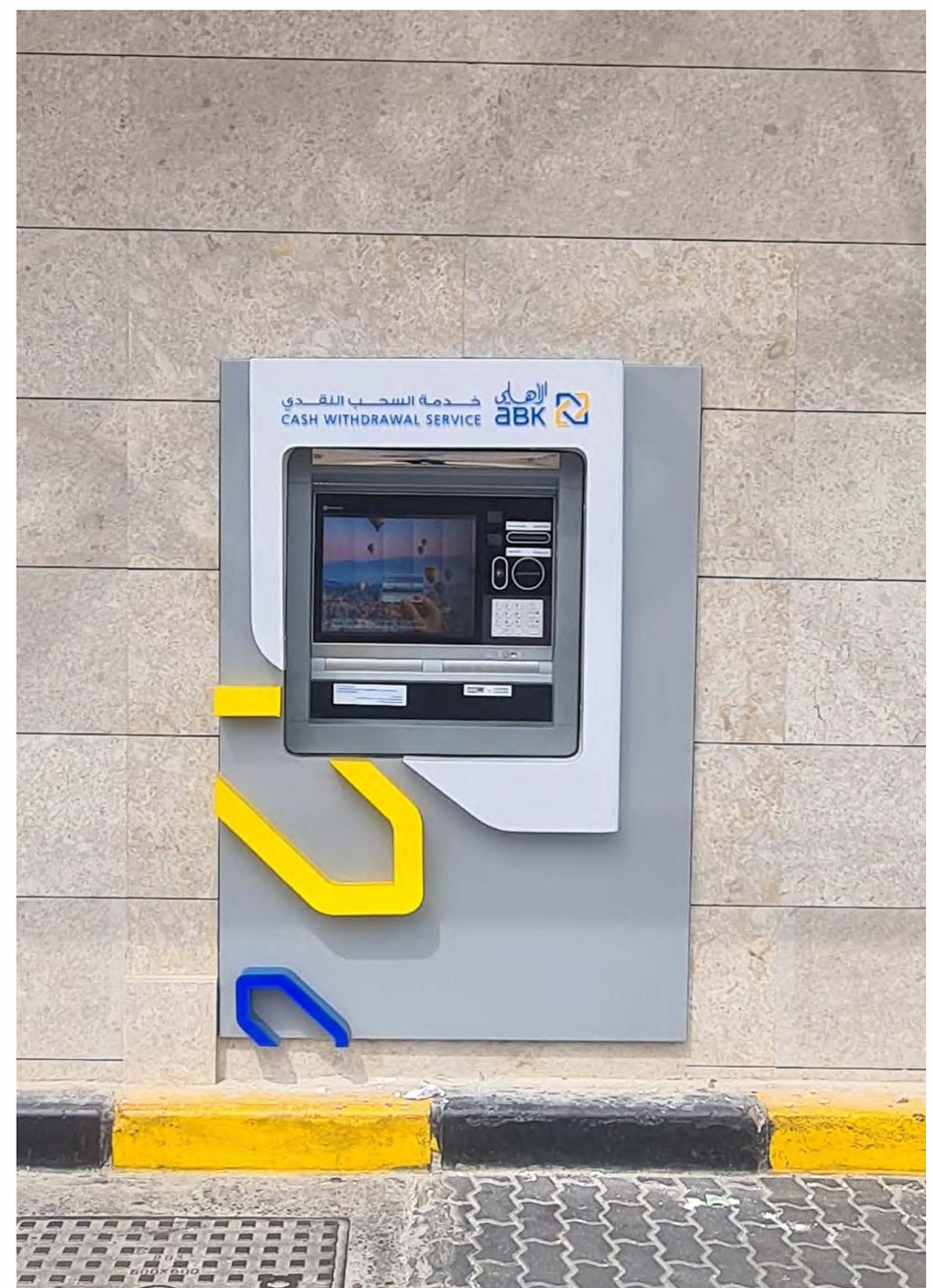








Road Signs made of Heavy Duty base plate with concrete base  
All perforated sheet bend and shaped to match two sides and powder coated along with aluminum laser cut with white powder coated, installed with acrylic bend and shaped to match the design



Aluminum powder coated two panels with acrylic bend and shaped to match the design





السحب الآلي  
ATM 24/7











Booth flooring made of steel structure and placed 20mm thick clear acrylic with skirting black powder coated aluminum, the half round shaped by aluminum pipes and clear acrylic along with high quality translucent stickers to match the design







